

IsoGeometric Collocation Method

Setting:

- Collocation is based on discretization of strong form
- Avoids numerical integration and produces attractive matrices
- However, smoothness requirements
- IsoGeometric Analysis meets these regularity prerequisites

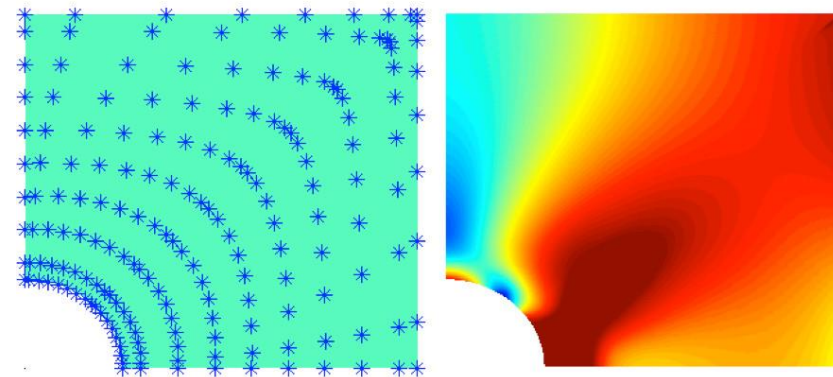
Your Tasks:

Implement and investigate IsoGeometric collocation in FCMLab (MATLAB):

- Get familiar with FCMLab.
- Implement IsoGeometric Collocation in 1D and 2D.
- Produce various examples and compare results.

Project Characteristics

Numerics: ★★★★★
Mathematics: ★★★★★
Programming: ★★★★★



www.uni-due.de

